

**DHG June/Summer Newsletter Sample – Margaret Arafat**

I found this pattern in my 2013 CHT Conference Goodie Bag, and kept it for the sample exchange envisioned by Marty and Shannon. Their plan was that we update our samples using some of the newer, more modern fibers available. Since that plan didn't pan out, I chose to share it as the DHG Sample for this issue of the Newsletter. I only made minor changes, and forgot about using "modern" fibers since that would be too pricey for the numbers of samples needed. However, I do have a plan for a future project using this draft that will include active yarn.

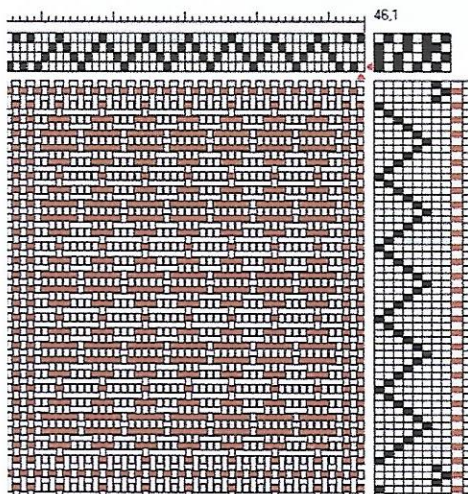
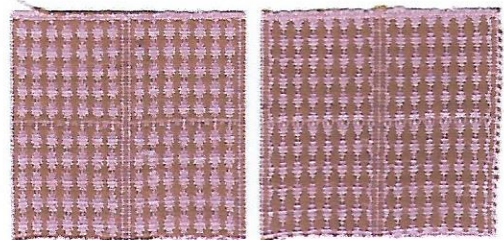
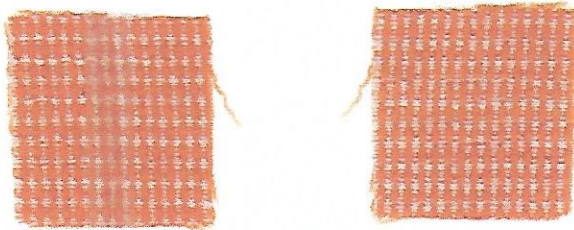
The sample is from "Warp and Weft," Vol. XXI, No. 7, published by Robin & Russ Handweavers in September 1968. Their sample was inspired by a previous one they saw at an exhibition. The article made no mention of what the original looked like with no discussion of the fiber, its color or sett, although R&R chose white 2/27 English worsted to create "an entirely different fabric." This sett was 36 epi, sleyed 3/dent in a 12-dent reed. The weft was the same fiber in white and amber.

The pattern is 4x6 Warp & Weft Ribs, with a pattern repeat of 7 ends x 10 picks. This warp is 16/2 unmercerized cotton, at 30 epi, sleyed 2/dent in a 15-dent reed. Weft threads are the same 16/2 unmercerized cotton and contrasting 10/2 pearl cotton.

The other alterations were to insert four warp threads after every seven pattern repeats for plain weave lines to run the length of the cloth, and to add three tabby picks (1-3 and 2-4) following five treading repeats which increased the treadles used to eight. I didn't want these particular samples to have a completely uniform look so each sample is a little window with four blocks. If/When I weave the pattern with an active fiber, I would omit these extra threads.

**1968 Sample Sides A&B**

**2016 Sample Sides A&B**



**2016 Draft = 1968 draft + 1-4-1-4 in threading +  
tabby on shafts 7&8**