



Contemporary Hand Weavers of Texas, Inc.

Volume 24, No. 4

-15-

April 1973

SWATCH - DRAPERY

WOVEN BY MRS. GENE NANCE

Warp: X = 2/8 natural mohair & wool
O = 10 1/2 / 3 natural spun silk

Weft: Same as warp

Sett: 18 ends per inch

DRAFT

	X				
X					
X		OO		OO	
	X		OO		OO

12 ends

TIE-UP

- Tr. 1 - Hs. 1, 3, 4
- Tr. 2 - Hs. 2, 3, 4
- Tr. 3 - Hs. 1
- Tr. 4 - Hs. 2
- Tr. a - Hs. 2, 4
- Tr. b - Hs. 1, 3

TREADLING

- Tr. b mohair & wool
- Tr. 1 mohair & wool
- Tr. 2 mohair & wool
- Tr. a mohair & wool
- Tr. b silk doubled
- Tr. 3 silk doubled
- Tr. 4 silk doubled
- Tr. a silk doubled

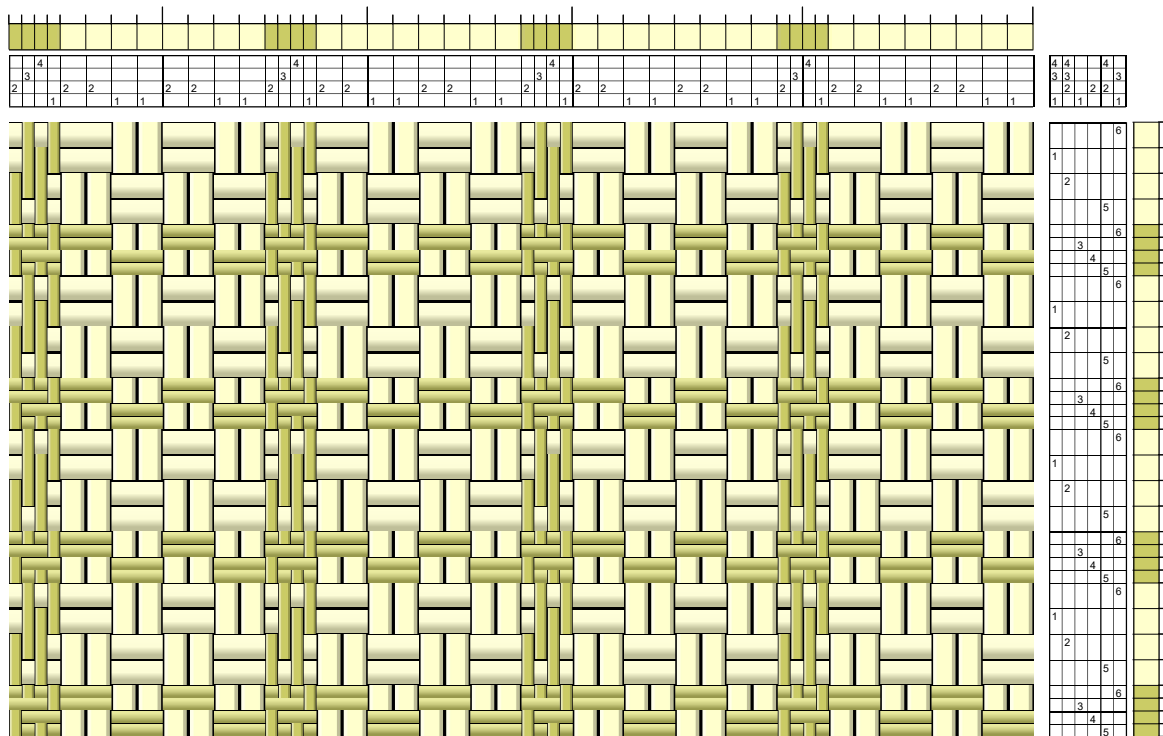
37 1/2" x 5 yds. 3" before washing
33" x 4 yds. 34" after washing



This material must be washed to get the puffed effect, caused by the wool shrinking more than the silk. For a six yard warp, thirty inches wide, it took two pounds of the mohair and wool and one pound of the spun silk.

The yardage was exhibited in the Tulsa Philbrook Art Museum during the Oklahoma Designer Craftsman showing.

*36 ends { 12 wool
24 silk } 1" wide*



Sample CHT Volume 24 Number 4 A April, 1973
Woven by Mrs Gene Nance

Warp:

Thick = 2/8 natural mohair & wool

Thin = 10 1/3 / 3 natural spun silk (read "ten and one-third over 3")

Weft: Same as warp

Sett: 18 epi

This material must be washed to get the puffed effect, caused by the wool shrinking more than the silk. For a six-yard warp, thirty inches wide, it took two pounds of the mohair and wool and one pound of the spun silk.

37 " x 5 yards 3" before washing

33" x 4 yards 34" after washing

The yardage was exhibited in the Tulsa Philbrook Art Museum during the Oklahoma Designer Craftsman showing