



Contemporary Hand Weavers of Texas, Inc.

Volume 24, No. 4

-16-

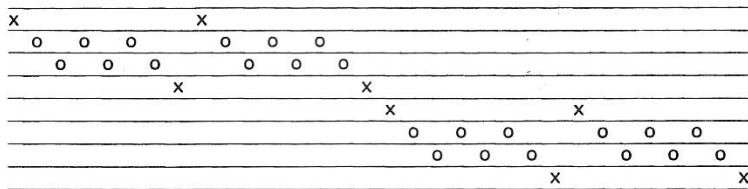
April 1973

SWATCH - HONEY COMB, COAT FABRIC OR DECORATIVE FABRIC

WOVEN BY
BEE ALDRICH

Project: Honey Comb - Fabric
 Harness: 8-harness, 8-treadles
 Sett: 15 dent reed (Blue 2 per dent, brown 1 per dent)
 Warp: Blue Weaving Wool 14/2 (4200 yds. per lb.) - Lily Mills = O
 Brown - Sport Yarn (Knitting) acrylic, 2-ply, Sears-Roebuck = X
 Weft: Same as warp.
 Source: *Yellow Series* by Malin Selander

DRAFT



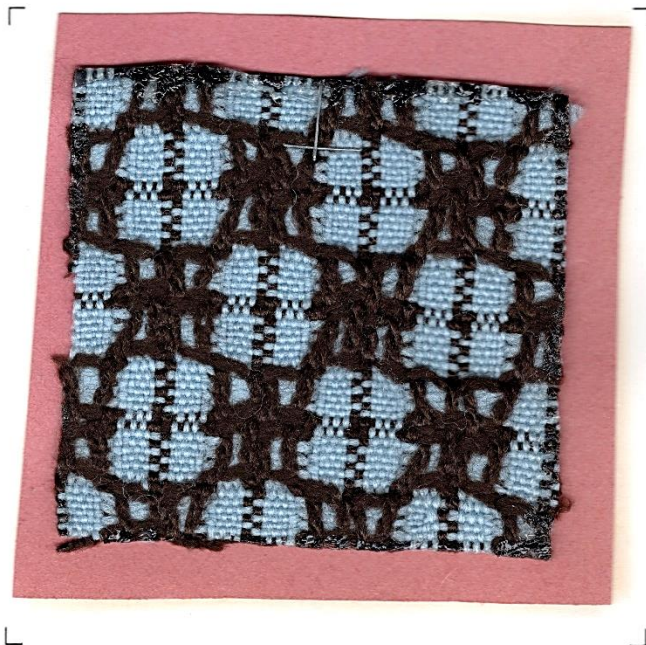
Tie-Up

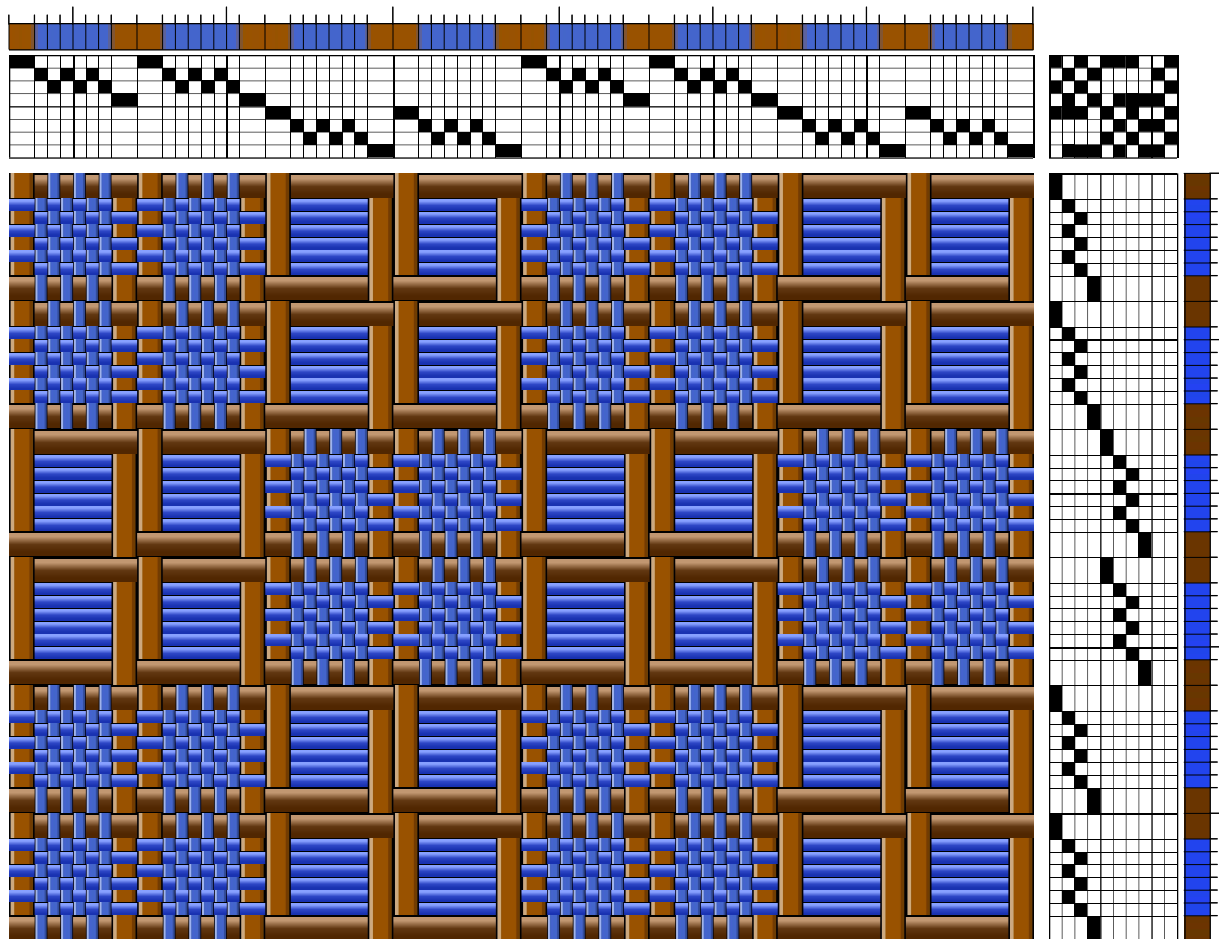
Tr. 8 - Hs. 1, 3, 5
 Tr. 7 - Hs. 2, 4, 5, 8
 Tr. 6 - Hs. 1, 3, 5, 8
 Tr. 5 - Hs. 2, 4, 8
 Tr. 4 - Hs. 1, 5, 7
 Tr. 3 - Hs. 1, 4, 6, 8
 Tr. 2 - Hs. 1, 4, 5, 7
 Tr. 1 - Hs. 4, 6, 8
 A - Hs. 1, 3, 5, 7
 B - Hs. 2, 4, 6, 8

Note: These samples were woven as part of the Guild's yearly project. See page 5.

Treadling

1 = x
 2 = o
 3 = o
 2 = o 2x
 3 = o
 2 = o
 3 = o
 4 = x
 5 = x
 6 = o
 7 = o
 6 = o 2x
 7 = o
 6 = o
 7 = o
 8 = x





Sample CHT Volume 24 Number 4 B April, 1973
 Honeycomb Fabric
 Woven by Bee Aldrich

Warp:

Thin = Weaving Wool 14/2 (4200 yards per pound) Lily Mills Color: Blue
 Thick = Sport Yarn (Knitting) acrylic, 2-ply, Sears-Roebuck Color: Brown

Weft:

Same as warp

Sett: 15 dent reed -- Blue/Thin 2 per dent and Brown/Thick 1 per dent

Source: Yellow Series, Malin Selander

This sample was woven as part of the Oklahoma City Guild's yearly project

Archivist note: This structure has long floats on the front and back of the fabric.