



contemporary hand weavers of Texas, Inc.

Volume 24, No. 4

-17-

April 1973

SWATCH

BY THE WEAVERS' GUILD OF OKLAHOMA CITY

This swatch is from our annual weaving demonstration at the State Fair of Oklahoma. The draft is an adaptation of Upholstery from Saterlagen in M. Davison's Pattern Book, page 49. For weaving these samples, we want to thank the following members: Mary Bush, Peggy Hamblett, Bee Hoffman, Laynie Humphrey, Maude Lynn, Nancy Matter, Susan Moerlins, Barbara Morrison, Fan Nance, Christine Riggs, and Ruth Snyder. Special thanks go to Peggy Hamblett who wove off the biggest part of the yardage.

Draft

4	4	4	4
3	3	3	3
2	2	2	2
1	1	1	1
3x		3x	

Jack Tie-Up

Tr. 1 - Hs. 1, 2
 Tr. 2 - Hs. 3, 4
 Tr. 3 - Hs. 1, 4
 Tr. 4 - Hs. 2, 3

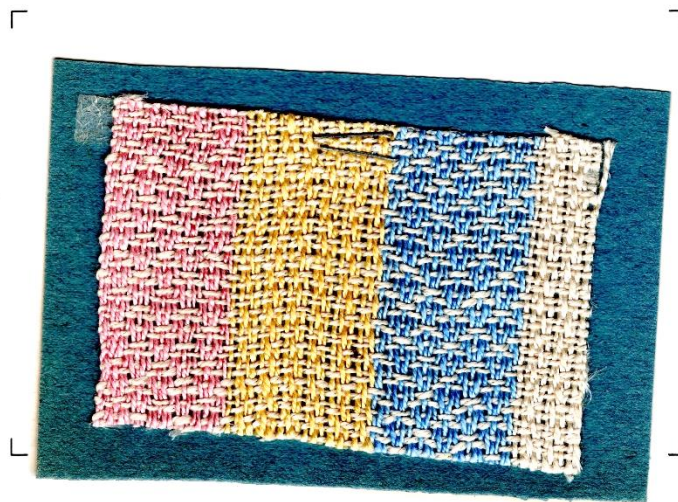
Treading

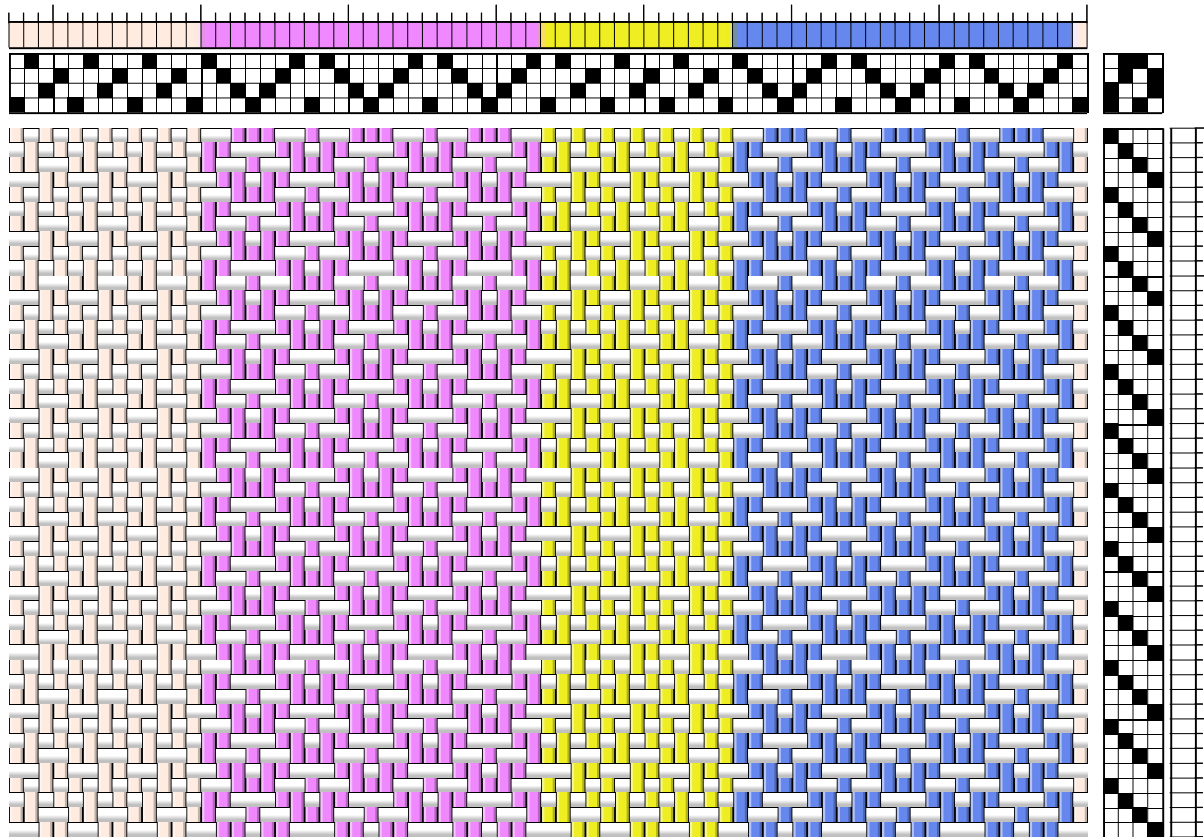
Tr. 1
 Tr. 2
 Tr. 3
 Tr. 4
 Repeat

Warp: 20/2 linen, pink, yellow, blue, natural - each color was threaded 24 ends

Weft: 20/2 natural linen

Sett: 24 ends per inch





Sample CHT Volume 24 Number 4 C April 1973
by the Weavers' Guild of Oklahoma City

Warp: 20/2 linen pink, yellow, blue, natural each end threaded 24 ends
Weft: 20/2 natural linen
Sett: 24 epi

This swatch is from our annual weaving demonstration at the State Fair of Oklahoma. The draft is an adaptation of Upholstrery from Saterlagen in M. Davison's Pattern Book, page 49. For weaving these samples we want to thank the following members: Mary Bush, Peggy Hamblett, Bee Hoffman, Laynie Humphrey, Maude Lynn, nancy Matter, Susan Moerlins, Barbara Morrison, Fan Nance, Christine Riggs, and Ruth Snyder. Special thanks go to Peggy Hamblett who wove off the biggest part of the yardage.