



Contemporary Hand Weavers of Texas, Inc.

Volume 24, No. 3

-6-

February 1973

UPHOLSTERY FABRIC

MAX L. LENDERMAN

1704 CLOUGH STREET, SUITE 108
BOWLING GREEN, OHIO 43402

ASSISTANT PROFESSOR OF WEAVING AT BOWLING GREEN STATE UNIVERSITY

PATTERN: 4 fold M's and O's from Marguerite Davidson

FIBERS: Warp: Craft Yarn Weaving Worsted - color name: Buttercup — Division threads for setting up warp were Craft Yarn Weaving Worsted - color name: Olive Brown.

Weft: Craft Yarn Weaving Worsted - color name: Olive Brown — Old Mill Rug Yarn - color name: Natural 4-ply — Division threads at completion of treadle sequence, Craft Yarn Weaving Worsted - color name: Buttercup.

WARP: See FIBERS

Sett 16

Number of threads per pattern 32

Reed 16

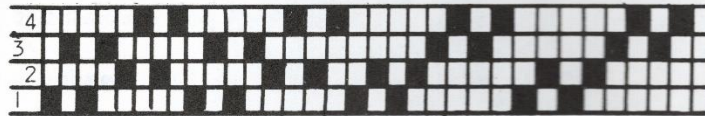
Sley Single & division threads, warp two double sley

Selvedge 4 per side

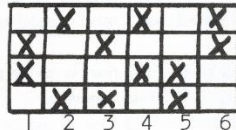
WEFT: See FIBERS

Square pattern by 32 shots of worsted and 6 shots 4-ply rug yarn.

THREADING DRAFT:



TREADLE TIE-UP:



TREADLE SEQUENCE:

4 times, treadles 6, 5 with Craft Yarn Weaving Worsted _____

1 time , treadles 6, 5 with Old Mill Rug Yarn Natural 4-ply _____

4 times, treadles 4, 3 with Craft Yarn Weaving Worsted _____

1 time , treadles 4, 3 with Old Mill Rug Yarn Natural 4-ply _____

4 times, treadles 4, 3 with Craft Yarn Weaving Worsted _____

1 time , treadles, 6, 5 with Old Mill Rug Yarn Natural 4-ply _____

4 times, treadles 6, 5 with Craft Yarn Weaving Worsted _____

Repeat

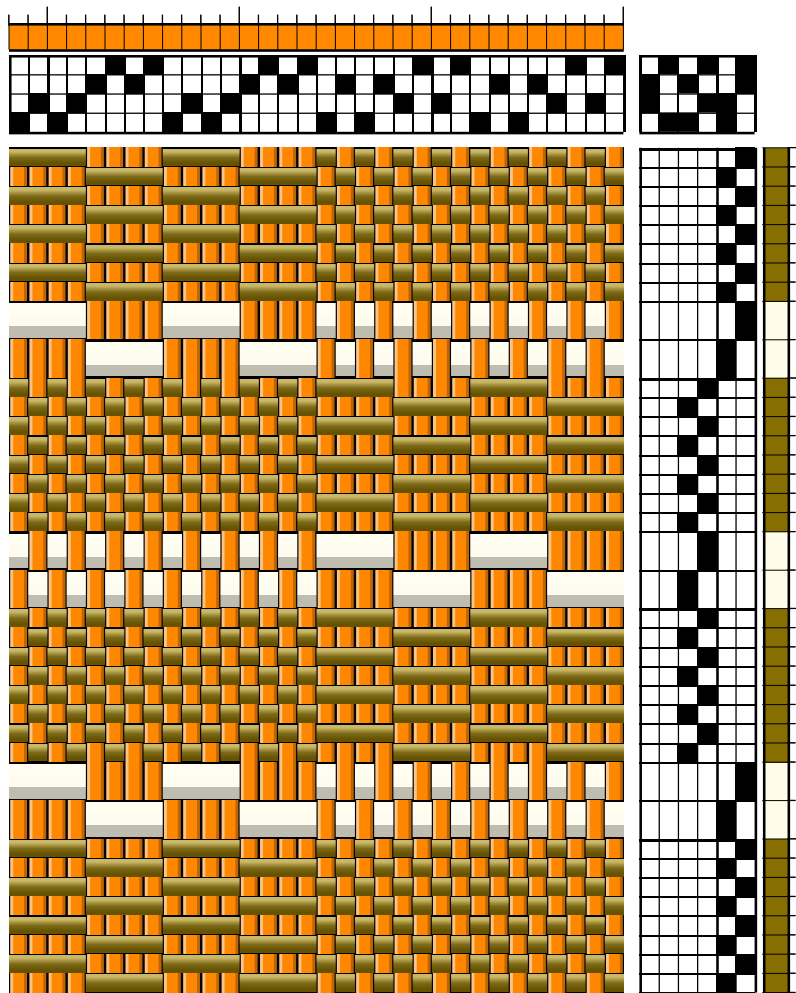
Division of completed pattern was woven with
 Craft Yarn Weaving Worsted _____
 on treadles 1 and 2 one time. Plain weave woven with
 treadles 1 and 2.

FINISHING FABRIC:

Take to dry cleaners for heavy steam and hard press for shrink. These samples have not been processed and are secured on all edges with a zig-zag machine stitch.

Pattern sample secured to construction paper showing side woven facing weaver and from fell line upward.





Sample CHT Volume 24 Number 3 A February 1973
Upholstery Fabric

Woven by Max L Lenderman
Assistant Professor of Weaving at Bowling Green State University
1704 Clough Street, Suite 109, Bowling Green, Ohio 43402

Warp: Wool - Craft Yarn Weaving Worsted, color: buttercup
Weft: Thick = Wool - Old Mill Rug Yarn, color: Natural 4-ply
Thin = Wool - Craft Yarn Weaving Worsted, color: olive brown
Sett: 16 epi
Reed: 16 dent, sley 1 thread per dent
Selvedge: 4 threads each side

Recommended finishing professionally by a Dry Cleaner with a heavy steam and hard press to set and shrink. Sample were not finished and the edges were secured with a zig-zag stitch.