

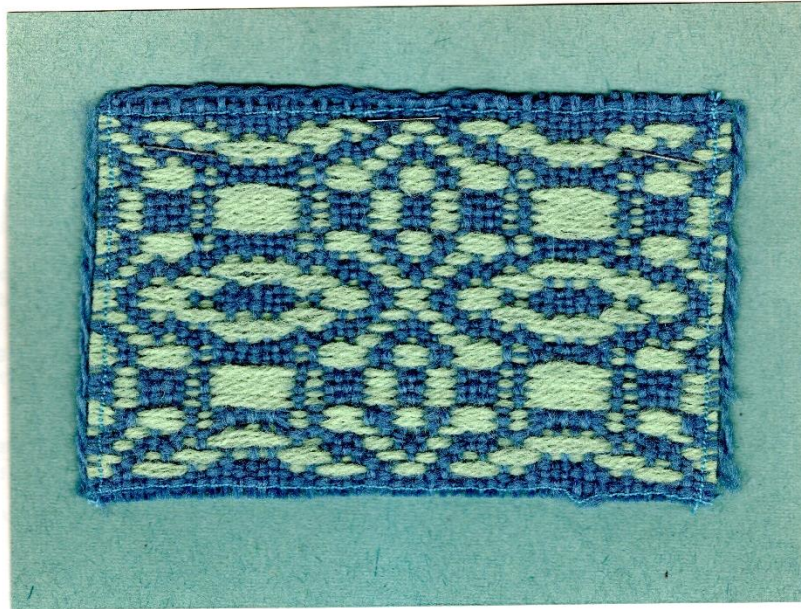


# contemporary hand weavers of Texas, Inc.

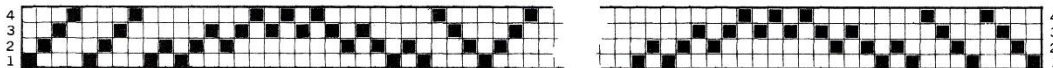
## FOUR HARNESS HONEYSUCKLE

POLLY TIGNER

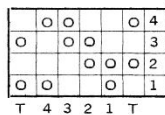
This particular weaving pattern is the result of a weaving error, by a beginning weaver, while weaving fabric for pillows.



Draft:



Tie-Up:



10 dent reed, sleyed: 1, 1, 1, 1, 2, 1, 1, 1, 1, 2

Warp and Tabby Weft: Blue two-ply wool

Weft: Pattern weft is contrasting color of Oregon Worsted *Maypole* used triple on bobbin.

Treading: 1 1x Woven with tabby

2 1x

3 1x

4 1x

1 2x

3 4x

1 2x

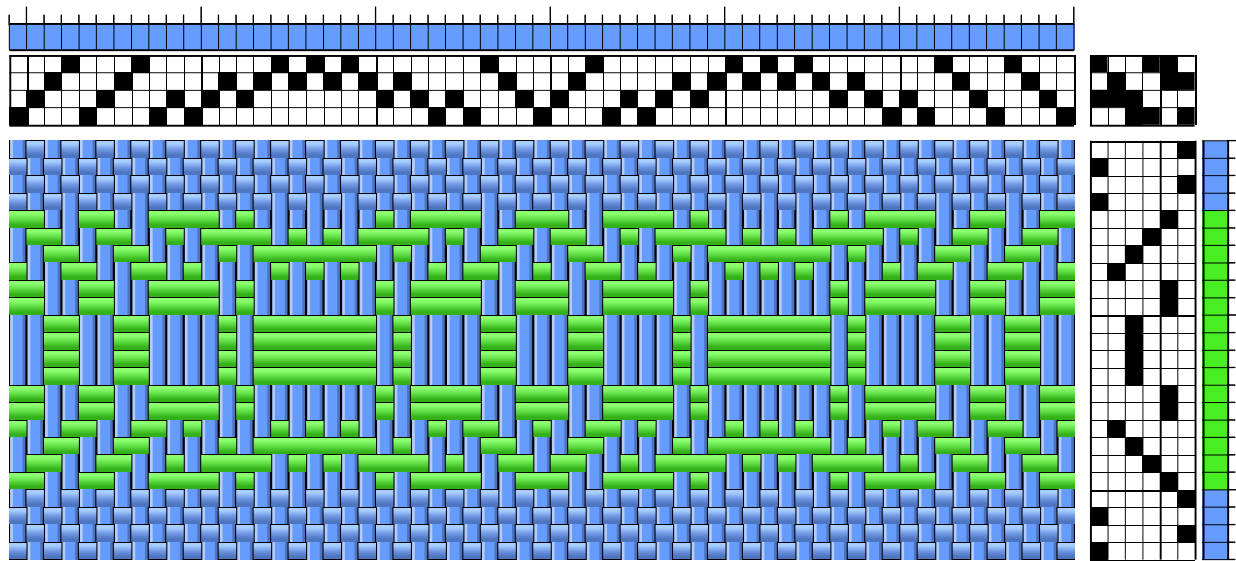
4 1x

3 1x

2 1x

1 1x

REPEAT



Sample CHT Volume 25 Number 1    October 1973  
woven by Polly Tigner

NOTE: This is woven with a tabby pick between pattern picks

Warp AND Tabby Weft: Blue 2-ply wool

Weft: Worsted Wool (Oregon Maypole) used triple on bobbin.

Sett: 12 epi (10 dent reed sleyed 1,1,1,1,2,1,1,1,2)

This particular weaving pattern is the result of a weaving error, by a beginning weaver, while weaving fabric for pillows.

The original sample shows a tieup for a sinking shed loom. The computer draft is for a rising shaft, jack type loom.